

# EF

Data sheet - rev. 1.0

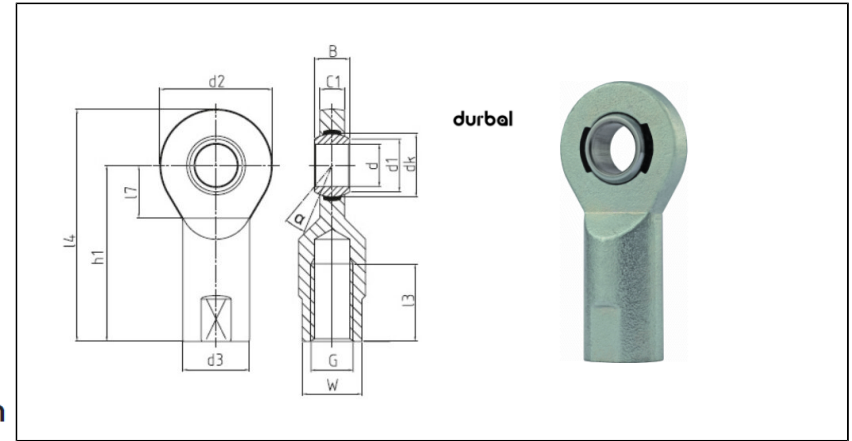
## Rod Ends - Classic Line

Rod ends with DURBAL-Glide (PTFE), female thread, series E/EH, DIN ISO 12240-4 & 8139, maintenance free

### FEATURES AND ADVANTAGES

- **HOUSING:** C45 forged steel, tempered, surface galvanized, free of Cr VI
- **RACE DURBAL-GLIDE:** Polyamid-PTFE-fibreglass-Compound
- **JOINT BALL:** 100Cr6 ball bearing steel, hardened, ground, polished and hard chromium plated
- **MAINTENANCE:** maintenance free
- **TEMPERATURE RANGE:** -30° C to +60° C
- **USE & MAINTENANCE :** [see this page](#)
- **STATIC LOAD SERVICE LIFE :** [see this page](#)
- **TOLERANCES :** [see this page](#)

### COMPONENTS AND DIMENSIONS



| Type              |                  | Measurements [mm] |          |    |    |      |    |     |    |      |       |       |      |    |    | Tilt angle | Rotational speed limit                | Axial factor |    | Basic load rating |              | Radial clearance | Weight |
|-------------------|------------------|-------------------|----------|----|----|------|----|-----|----|------|-------|-------|------|----|----|------------|---------------------------------------|--------------|----|-------------------|--------------|------------------|--------|
| Right hand thread | Left hand thread | d                 | G        | B  | C1 | h/h1 | d1 | d2  | d3 | dk   | l1/l3 | l2/l4 | l5   | l7 | W  | α (°)      | n <sub>max</sub> (min <sup>-1</sup> ) | Y            | Y0 | dyn C (kN)        | stat C0 (kN) | CN (µm)          | kg     |
| EF 06 - 20 - 501  | EF 06 - 20 - 502 | 6                 | M6       | 6  | 4  | 30   | 8  | 20  | -  | 10   | 12    | 40    | 8.5  | 11 | 9  | 13         | -                                     | -            | -  | 2.5               | 11.3         | 0-10             | 0.02   |
| EF 08 - 20 - 501  | EF 08 - 20 - 502 | 8                 | M8       | 8  | 5  | 36   | 10 | 23  | -  | 13   | 16    | 47.5  | 10.5 | 12 | 11 | 15         | -                                     | -            | -  | 4.2               | 14.1         | 0-10             | 0.03   |
| EF 10 - 21 - 501  | EF 10 - 21 - 502 | 10                | M10x1.25 | 9  | 6  | 43   | 13 | 28  | -  | 16   | 20    | 57    | 10.5 | 13 | 14 | 12         | -                                     | -            | -  | 6.4               | 21           | 0-10             | 0.05   |
| EF 10 - 20 - 501  | EF 10 - 20 - 502 | 10                | M10      | 9  | 6  | 43   | 13 | 28  | -  | 16   | 20    | 57    | 10.5 | 13 | 14 | 12         | -                                     | -            | -  | 6.4               | 21           | 0-10             | 0.05   |
| EF 12 - 20 - 501  | EF 12 - 20 - 502 | 12                | M12      | 10 | 7  | 50   | 15 | 32  | -  | 18   | 22    | 66    | 12.5 | 15 | 17 | 10.5       | -                                     | -            | -  | 9.2               | 29.2         | 0-10             | 0.09   |
| EF 12 - 21 - 501  | EF 12 - 21 - 502 | 12                | M12x1.25 | 10 | 7  | 50   | 15 | 32  | -  | 18   | 22    | 66    | 12.5 | 15 | 17 | 10.5       | -                                     | -            | -  | 9.2               | 29.2         | 0-10             | 0.09   |
| EF 15 - 20 - 501  | EF 15 - 20 - 502 | 15                | M14      | 12 | 9  | 61   | 18 | 38  | -  | 22   | 25    | 80    | 12.5 | 18 | 19 | 8.5        | -                                     | -            | -  | 13.4              | 42.7         | 0-10             | 0.14   |
| EF 17 - 20 - 501  | EF 17 - 20 - 502 | 17                | M16      | 14 | 10 | 67   | 20 | 44  | -  | 25   | 28    | 89    | 16.5 | 20 | 22 | 10         | -                                     | -            | -  | 19.2              | 49.4         | 0-10             | 0.21   |
| EF 17 - 21 - 501  | EF 17 - 21 - 502 | 17                | M16x1.5  | 14 | 10 | 67   | 20 | 44  | -  | 25   | 28    | 89    | 16.5 | 20 | 22 | 10         | -                                     | -            | -  | 19.2              | 49.4         | 0-10             | 0.21   |
| EF 20 - 20 - 501  | EF 20 - 20 - 502 | 20                | M20x1.5  | 16 | 12 | 77   | 24 | 51  | -  | 29   | 33    | 102.5 | 17.5 | 23 | 24 | 9          | -                                     | -            | -  | 25.2              | 65.6         | 0-10             | 0.29   |
| EF 25 - 20 - 501  | EF 25 - 20 - 502 | 25                | M24x2    | 20 | 16 | 94   | 29 | 62  | -  | 35.5 | 42    | 125   | 19.5 | 30 | 30 | 7.5        | -                                     | -            | -  | 42.4              | 108.1        | 0-10             | 0.57   |
| EF 30 - 20 - 501  | EF 30 - 20 - 502 | 30                | M30x2    | 22 | 18 | 110  | 34 | 70  | -  | 40.7 | 51    | 145   | 19.5 | 32 | 36 | 6          | -                                     | -            | -  | 54                | 136.4        | 0-10             | 0.91   |
| EF 35 - 21 - 501  | EF 35 - 21 - 502 | 35                | M36x2    | 25 | 20 | 130  | 39 | 82  | -  | 47   | 66    | 171   | 24.5 | 38 | 41 | 6.5        | -                                     | -            | -  | 70.4              | 180          | 0-10             | 1.23   |
| EF 35 - 20 - 501  | EF 35 - 20 - 502 | 35                | M36x3    | 25 | 20 | 125  | 39 | 82  | -  | 47   | 61    | 166   | 24.5 | 38 | 41 | 6.5        | -                                     | -            | -  | 70.4              | 180          | 0-10             | 1.23   |
| EF 40 - 21 - 501  | EF 40 - 21 - 502 | 40                | M39x3    | 28 | 22 | 142  | 45 | 92  | -  | 53   | 66    | 188   | 24.5 | 42 | 46 | 7          | -                                     | -            | -  | 86                | 222.9        | 0-10             | 1.88   |
| EF 40 - 20 - 501  | EF 40 - 20 - 502 | 40                | M42x3    | 28 | 22 | 145  | 45 | 92  | -  | 53   | 71    | 191   | 24.5 | 42 | 50 | 7          | -                                     | -            | -  | 86                | 222.9        | 0-10             | 2.08   |
| EF 45 - 21 - 501  | EF 45 - 21 - 502 | 45                | M42x3    | 32 | 25 | 145  | 50 | 102 | -  | 60   | 66    | 196   | 29.5 | 50 | 50 | 7.5        | -                                     | -            | -  | 107               | 280.7        | 0-10             | 2.5    |
| EF 45 - 20 - 501  | EF 45 - 20 - 502 | 45                | M45x3    | 32 | 25 | 165  | 50 | 102 | -  | 60   | 76    | 216   | 29.5 | 50 | 55 | 7.5        | -                                     | -            | -  | 107               | 280.7        | 0-10             | 3.09   |
| EF 50 - 20 - 501  | EF 50 - 20 - 502 | 50                | M52x3    | 35 | 28 | 195  | 55 | 112 | -  | 66   | 89    | 251   | 30.5 | 60 | 60 | 6.5        | -                                     | -            | -  | 132               | 338.5        | 0-10             | 3.98   |
| EF 50 - 21 - 501  | EF 50 - 21 - 502 | 50                | M45x3    | 35 | 28 | 160  | 55 | 112 | -  | 66   | 69    | 216   | 30.5 | 60 | 55 | 6.5        | -                                     | -            | -  | 132               | 338.5        | 0-10             | 3.2    |
| EF 60 - 20 - 501  | EF 60 - 20 - 502 | 60                | M60x4    | 44 | 36 | 225  | 66 | 135 | -  | 80   | 103   | 292.5 | 33.5 | 70 | 70 | 6.5        | -                                     | -            | -  | 208               | 526.6        | 0-10             | 7.3    |
| EF 60 - 21 - 501  | EF 60 - 21 - 502 | 60                | M52x3    | 44 | 36 | 175  | 66 | 135 | -  | 80   | 71    | 242.5 | 33.5 | 70 | 60 | 6.5        | -                                     | -            | -  | 208               | 526.6        | 0-10             | 5.9    |

# ***ROTATIONAL UNITS***